

CELL :- Utility **CELL NAME:-** Air compressor **M/C STAGE :-** Compressor **OPERATION:-** Air compressor

KAIZEN THEME :- Cost to be reduce

IDEA :- Use cable tray

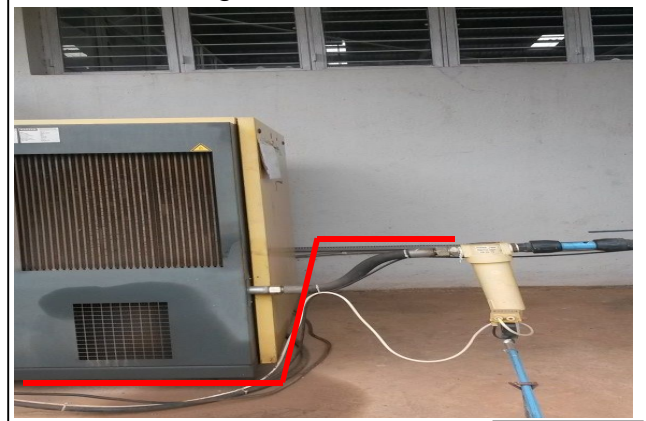
WIDELY/DEEPLY:-

COUNTERMEASURE:- Provided a cable tray to do the routing of the cable, so reduced the routing length 35 mtr to 25 mtr including for 5 cables .

BENCHMARK TARGET	01No.
KAIZEN START	28.02.2016
KAIZEN FINISH	28.02.2016

PROBLEM / PRESENT STATES:- For connecting of VFD its required 35 meter of 25 sq.mm *4 core cable as per the current routing.

TEAM MEMBERS :-
Pawan, Chandan



BEFORE

AFTER

BENEFITS :-

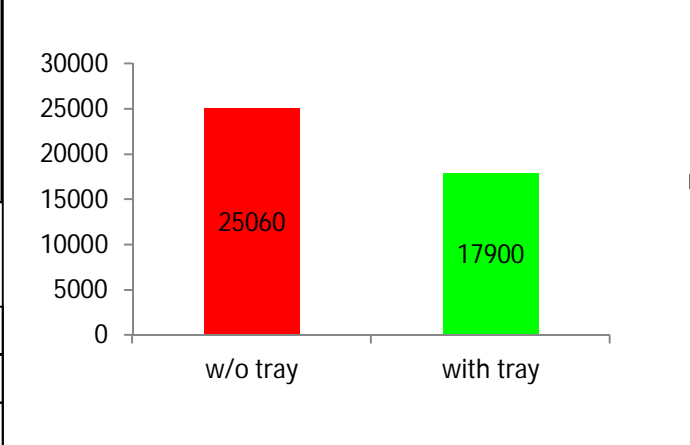
1. Maintenance cost reduced.
2. Power loss reduced

Why1 :- Cable tray fixed
Why2 :- more cost
Why2 :- more cable required
Why3 :- routing is difficult

RESULT:- Saved Rs.7160/-

KAIZEN SUSTENANCE

WHAT TO DO.
HOW TO DO:
FREQUENCY



COST INCURRED

MATERIAL COST IN RS	LABOUR COST IN RS	TOTAL COST IN RS
700	-----	700

ROOT CAUSE :- Proper routing

HORIZONTAL DEPLOYMENT

SR. NO.	CELL	TARGET	RESPONSIBILITY	STATUS

REGISTRATION NO. & DATE : 1011 & 29.02.16

REGISTERED BY :- Gurubasapa

MANAGER'S SIGN :- Dinesh.M